

ÖZELLİKLER

■ Difüzör	Paslanmaz Çelik (AISI 340L)
■ Çark	Paslanmaz Çelik (AISI 340L)
■ Pompa mili	Paslanmaz Çelik (AISI 420)
■ Kaplin	Paslanmaz Çelik (AISI 420)
■ Süzgeç	Paslanmaz Çelik (AISI 304)
■ Çıkış haznesi bağlantısı	4" (İçten pasolu)
■ Maksimum kum miktarı	50 gr/ m ³
■ Klepe	Paslanmaz Çelik
■ Maksimum gerilim değişimi	380-415 V (+%6 / - %10)
■ Frekans	50 Hz
■ Maksimum su sıcaklığı	60 °C
■ Koarma sınıfı	IP 68

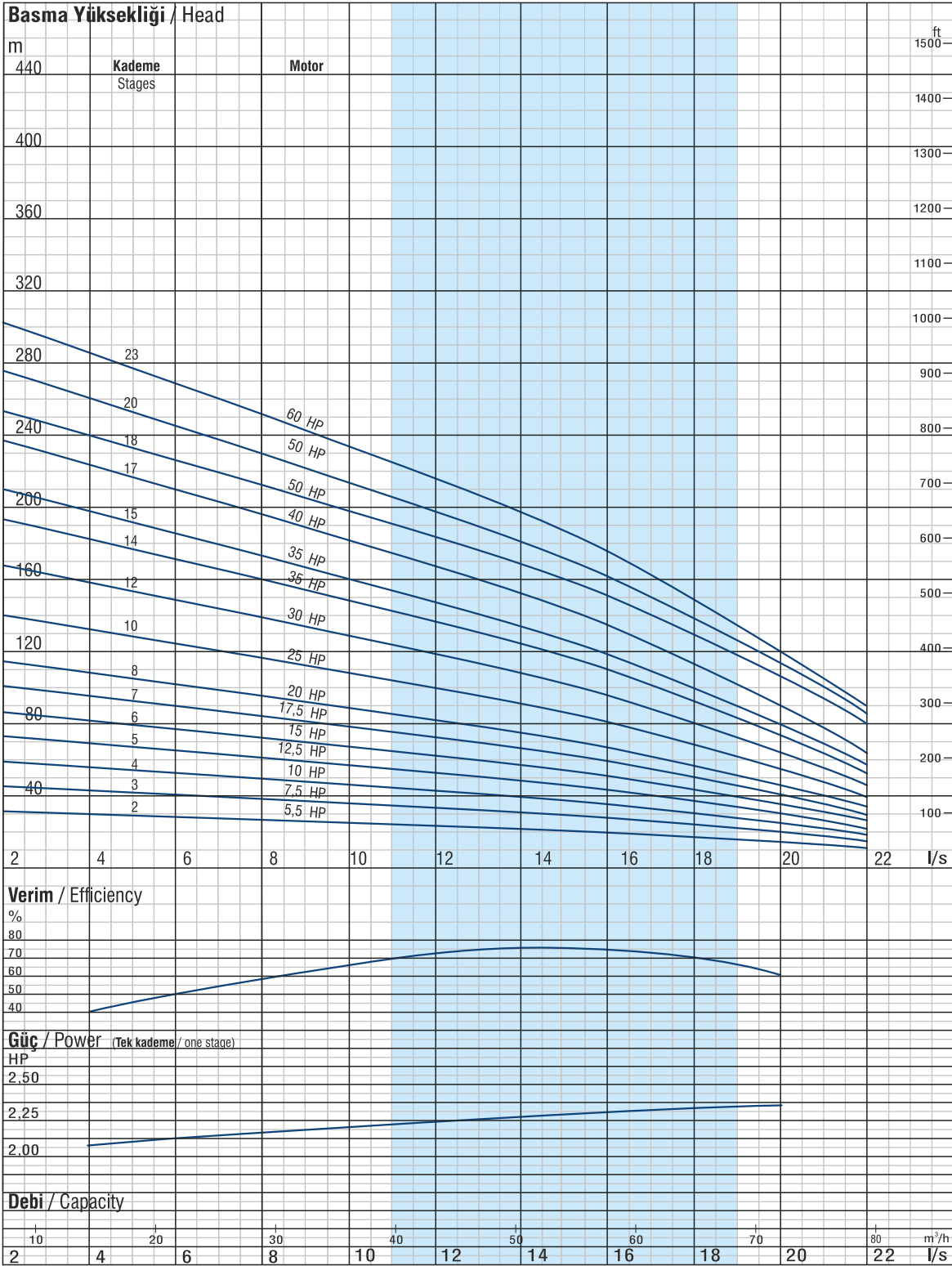
SPECIFICATION

■ Diffuser	Stainless steel (AISI 340L)
■ Impeller	Stainless steel (AISI 340L)
■ Pumps shaft	Stainless steel (AISI 420)
■ Coupling	Stainless steel (AISI 420)
■ Strainer	Stainless steel (AISI 304)
■ Outlet connection diameter	4" (Inside threaded)
■ Max. sand content	50 gr/ m ³
■ Valve cap	Stainless steel
■ Voltage	380-415 V (+%6 / - %10)
■ Frequency	50 Hz
■ Max. water temperature	60 °C
■ Voltage	IP 68

ÖLÇÜ TABLOSU / DIMENSION TABLE

Pompa Tipi Pump Type	Motor		Ölçüler / Dimensions (mm)					Ağırlık / Weight (Kg)		
	kW	Hp	L	LM	LP	FM	FP	Motor	Pompa Pump	Toplam Total
JSP 06060 / 02	4,0	5,5	1.116	639	477	142	144	44	10	54
JSP 06060 / 03	5,5	7,5	1.274	668	606	142	144	47	12	59
JSP 06060 / 04	7,5	10,0	1.467	748	719	142	144	53	14	67
JSP 06060 / 05	9,3	12,5	1.620	788	832	142	144	57	16	73
JSP 06060 / 06	11,0	15,0	1.786	841	945	142	144	61	18	79
JSP 06060 / 07	13,0	17,5	1.959	901	1.058	142	144	66	20	86
JSP 06060 / 08	15,0	20,0	2.134	963	1.171	142	144	72	23	95
JSP 06060 / 10	18,5	25,0	2.393	996	1.397	142	144	80	27	107
JSP 06060 / 12	22,0	30,0	2.719/2.513	1.096/890	1.623	142/172	144	86/105	32	118/137
JSP 06060 / 14	26,0	35,0	3.186/2.909	1.337/1.060	2.075	142/172	144	90/110	37	141/154
JSP 06060 / 15	26,0	35,0	3.525/3.248	1.337/1.060	2.188	142/172	144	90/110	45	149/162
JSP 06060 / 17	30,0	40,0	2.467/3.200/3.276	1.247/980/1.056	2.220	142/172/192	144	104/117/127	48	152/165/175
JSP 06060 / 18	37,0	50,0	3.677/3.390/3.446	1.347/1.060/1.116	2.330	142/172/192	144	111/127/133	50	161/177/183
JSP 06060 / 20	37,0	50,0	3.787/3.500/3.556	1.347/1.060/1.116	2.440	142/172/192	144	111/127/133	53	164/180/186
JSP 06060 / 23	45,0	60,0	3.779/3.284	1.139/1.184	2.640	172/192	144	142/140	61	203/201

Çark Kanat Sayısı No. of Vanes 7	Dönüş Yönü / Rotation Saatin Tersi Yönünde Counter Clock Wise	Klepe Çıkışı / Outlet 4" İçten Pasolu 4" Inside Threaded	Pompa Dış Çapı Pump Outside Diameter 144 mm	Mil Çapı Shaft Diameter 22 mm
--	---	--	---	-------------------------------------



Hidrolik çalışma karakteristikleri 15°C deki suyla ve 1 bar atmosferik basınç altında alınmıştır
The hydraulic working characteristics have been calculated with water at 15°C at the atmospheric pressure of 1 bar

Performans eğrileri kinematik viskozite $n = 1\text{ mm}^2/\text{s}$ ve yoğunluk $r = 1000\text{ kg / m}^3$ temel alınarak oluşturulmuştur
Performance curves are based on the kinematic viscosity $n = 1\text{ mm}^2/\text{s}$ and density $r = 1000\text{ kg / m}^3$

Firmamız teknolojik gelişmeler nedeniyle değişiklik hakkını saklı tutar.

Due to continuous improvement in design we reserve the right to amend specifications or data without prior notice.